

Pressure Independent Balancing & Control Valve(DN15–DN32)

Application:

The series SDV(DN40–DN250) Pressure Independent Balancing & Control Valve and the series of SACDV actuator are designed in air-condition system and heating system, such as PAU, AHU, MAU and end-equipment. According to temperature requirement of air condition area and signals of control system to regulate terminal flow and maintain constant in pipe network. In order to ensure that terminal is not affected by other devices in the net work, keep the system high efficiency, saving energy and stable.

Features:

- Equal percentage flow characteristic
- Constant differential pressure is achieved
- Electronic preset of maximum flow facilitates on-site commissioning
- Fault auto-detection and alarm function
- The range with auto-detect function
- The regulator valve core is designed straight travel and provided Three actuator, such as Modulating, Floating point and ON/OFF type

Operating Principles:

Pressure independent Balancing valve consists of flowing adjustment and dynamic balancing.

The structure of flowing adjustment can achieve to set and regulate. It equipped with actuator which can realize to electronic regulate and shutoff function.

The structure of dynamic balancing can realize to flow constant. Its core part including diaphragm and spring. Diaphragm can induct differential pressure among of entrance and chamber of balancing valve core, and then keep constant differential pressure.

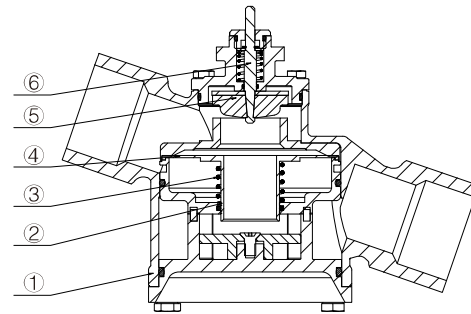
Technical Specification:

- Size: DN15–DN32
- Working Temperature: -10~120°C
- Working Pressure: PN25
- Fluid Medium: Water / Ethylene Glycol / Propylene Glycol
- Connection: Threaded Connection
- Connection Standard: EN10226 GB/T 7306.1–2000
- Control Deviation: ≤5%
- Working voltage: 24VAC
- Control signal: 0–10VDC/4–20mA
- Working Δ P: 30–400KPa
- IP Grade: Ip43
- Control Characteristic: Equal percentage

Technical Parameters:

Product Type:

Type	DN	Working Δ P (KPa)	Rated Flow (m³/h)	Actuator Force(N)	Actuating Time (S)
SDV015–OSP02	DN15	30–400	0.15–1.4	120	50
SDV020–OSP02	DN20	30–400	0.15–1.4	120	50
SDV025–OSP02	DN25	30–400	0.2–2.4	200	60
SDV032–OSP02	DN32	30–400	0.5–4.0	200	60



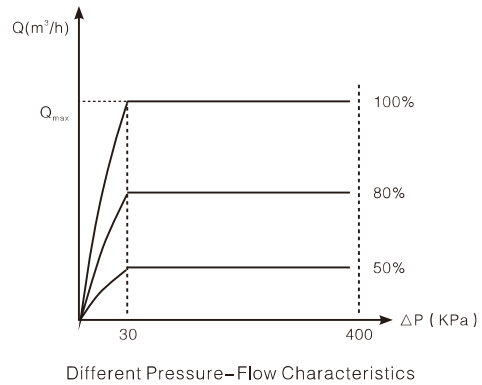
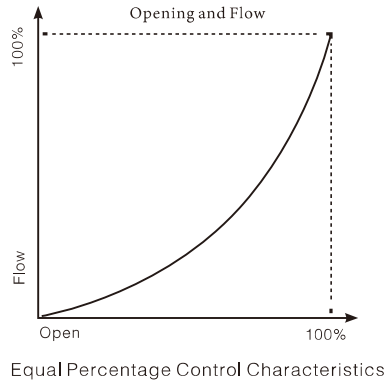
- Materials:
- ① Valve Body: Ductile Iron
 - ② Valve Core: Stainless steel
 - ③ Valve Stem: Stainless Steel
 - ④ Membrane: EPDM
 - ⑤ Spring: Stainless Steel
 - ⑥ Sealing: EPDM
 - ⑦ Actuator: Shell: Flame Retardant PC
Internals: Reinforced POM

Coding Rules:

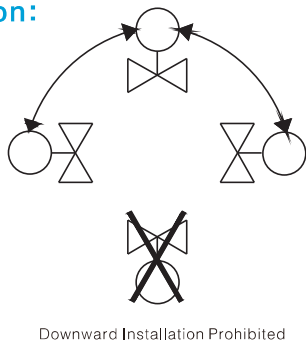
S	SUNFLU	S	DV	015	OS	P02
DV	PIBCV					
DN						
015–DN15	020–DN20					
025–DN25	032–DN32					
OS	Two way threaded connection					
Pressure						
P02	PN25					

Pressure Independent Balancing & Control Valve(DN15–DN32)

Flow characteristics:



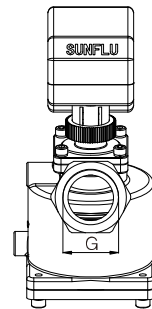
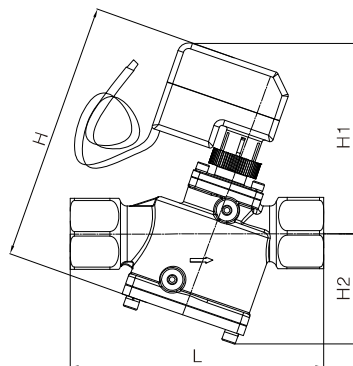
Installation:



Attention:

1. Please read the instructions carefully before installation, check product type and parameter. According to requirements, set working voltage and input signals
2. Ensure vertical installation as much as possible, and make room for maintenance
3. The direction of the arrow head on the valve body must accord with the direction of the flow. Wrong installation will lead to clog in the system.
4. It is suggested that the design system should be connected by the bypass, and the filling should be done by the by-pass to flush the impurities in the line, otherwise the valve will be blocked.
5. Before and after installation shall ensure that the valve set aside a certain length of straight pipe, general reserved diameter of 10 times the length of the straight pipe at the inlet pipe, diameter 5 times the length of straight pipe at the export pipe.

Dimension:



DN	L (mm)	H (mm)	H1 (mm)	H2 (mm)	G
15	120	123	122.5	55.5	G 1/2
20	120	123	122.5	55.5	G 3/4
25	140	127	127	64.5	G 1
32	178	134	134	75.5	G 1-1/4